

## Message from Sarah...

I can't believe it is almost Christmas!

It has been another very busy term with lots of fun activities both indoors and outdoors. Sporting NRG have continued to provide forest school sessions for some of the children. We have also had lots of festive activities including the Christmas fair, lunch, parties, a visit from Father Christmas and of course the Christmas productions. All the children were amazing and did so well performing in front of you all.

I would like to thank you all again for your support during the term and hope that you enjoy your family time!

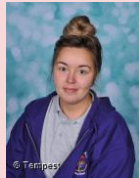


## Family Liaison Officer

Hello, my name is Catherine Fairclough and I am the Family Liaison and Safeguarding Officer here at White Ash.

My role in school is to provide support, advice and information to the families within our school community.

I can help you with any worries you may have about your child's education and wellbeing and I am also here as someone to talk to if you need support yourself.




## School Vision Statement

This term we have focused on: **Inspire**

We will guide and inspire our pupils to achieve all they can, ensuring that they are prepared for life beyond our school doors.

## White Ash Staffing

- We would like to take this opportunity to send a big congratulations to Danielle (Owl Teacher) on the birth of her baby girl Florence.
- Kayleigh (TA) has now finished for her maternity leave and we are awaiting news on the arrival of her baby.
- We have said a sad goodbye to Natasha (Puffin Teacher) who has left to take up an Assistant Head post in another SEN provision. We wish her lots of luck in her new role. 
- We would like to wish Kirsty (EYFS Teacher) all the very best with her upcoming Wedding, which is due before Christmas and also to Lisa L (TA) who is getting married after Christmas. We wish them all the very best on their magical days!

BABY



## Emergency numbers

(During the school Christmas closure)

Maundy Relief - 29/31 Abbey Street, Accrington.  
BB5 1EN - 01254 232328

HARV Outreach - [info@harvoutreach.org.uk](mailto:info@harvoutreach.org.uk) -  
01254 879855

Children's Social Care - 0300 123 6720 - out of  
hours - 0300 123 6722

1st call Hyndburn - Unit 20 Arndale Accrington  
BB5 1EX - 01254 238533

## SEND Inclusion Award

We are now proud to announce that we have successfully been awarded the prestigious SEND Inclusion Award. This recognition highlights our commitment to inclusive practices and our dedication to ensuring that every pupil, regardless of their needs or abilities, feels valued, supported, and empowered to thrive.

The award lasts for 3 years and is a testament to the hard work of all our staff, the strength of our partnerships with families, and our shared belief in an inclusive, nurturing educational environment for all.

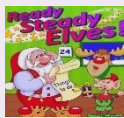
Thank you everyone for everything you do to support our children and families 😊 It will be September when we receive the full report and certificate. We will share this with you once received.



## Christmas Productions

On the 8<sup>th</sup> / 9<sup>th</sup> / 10<sup>th</sup> December we held our school Christmas Productions. We had a great attendance from Parents and Carers and have received some really positive feedback. We hope you all enjoyed the shows and both pupils and staff were really excited and worked hard to put on the best performance for you all!

We had such a good turn out that we ended up having to turn people away from the waiting list unfortunately. Thank you again for your support, it is greatly appreciated.



## Website

Please log on and have a look at our Website. We would love to hear your feedback! Take a look and let us know what you think!  
[www.whiteash.lancs.sch.uk](http://www.whiteash.lancs.sch.uk)

## Facebook

We are also on Facebook! Why not give our page a 'like' to see what we have been up to? Search for 'White Ash' on Facebook.



**Help us make White Ash a cashless school!**

**Do you have a ParentPay account?**

**If not, give the office a call and we will send you your activation codes.**

**This will allow you to pay for all dinners, trips etc. online.**



**ParentPay**

## Christmas Fair

Thank you to all who donated and attended our Christmas Fair on Friday 5<sup>th</sup> December.

We made a grand total of £836.85.

We are very grateful for all support. All monies raised will go towards Extra Curricular / Outdoor provision.



## Uniformerly

We are now a part of Uniformerly thanks to our ECO Club's "Wear it out. Don't throw it out" scheme.

You can browse our used preloved uniform by following the website:

<https://uniformerly.co.uk> and searching 'Oswaldtwistle White Ash School'.

If you have questions, please contact Catherine to discuss.



uniformerly

## Car Park

We are continuing to have issues at drop off and collection times due to vehicles coming through the gate by following the car in front (tailgating). **This is causing a major risk to the safety of the children being collected.**

All cars entering the car park must ring the intercom to Reception. This will allow us to notify you if any spaces are available. If we are full you will be asked to park on the road until a space becomes available.

**If parents continue to tailgate and enter the car park where there is no available space, we will have no alternative but to keep the gates closed.**

We appreciate your support with this matter.

## Christmas Party and Meal Day

On Wednesday 17<sup>th</sup> December we held our Christmas Parties in school.

We also had a visit from Father Christmas during the day.

Debbie and Ceri in the Kitchen cooked a full Christmas dinner for pupils and staff – which we all really appreciated!



## DATES FOR YOUR DIARY (December - February)

17 <sup>th</sup> December	Christmas Party Day and Father Christmas visit
19 <sup>th</sup> December	School closes for Christmas Break
5 <sup>th</sup> January	School reopens to all pupils
2 <sup>nd</sup> – 6 <sup>th</sup> February	Acts of Kindness Week (Linked to Child Mental Health)
10 <sup>th</sup> February	Safer Internet Day
13 <sup>th</sup> February	School closes for Half Term break
23 <sup>rd</sup> February	School reopens to all pupils

## Hairdresser

**Next date:**

**Friday 16<sup>th</sup> January**

Letters to follow in January on our return.



## Thank you

Thank you for all your support so far, this academic year. We would like to wish you all a lovely break and all the best for 2026!

